

Independence™**SEALED RECHARGEABLE LEAD-ACID****B A T T E R I E S**

YUASA
 Power/Full Solutions™


NP10-6 NP10-6FR

6V, 10Ah

Specifications

NOMINAL VOLTAGE: 6V**NOMINAL CAPACITY:**

20 hr. rate of 500 ma to 5.25V 10.0Ah

10 hr. rate of 930 ma to 5.25V 9.3Ah

5 hr. rate of 1700 ma to 5.10V 8.5Ah

1 hr. rate of 6000 ma to 4.80V 6.0Ah

WEIGHT (approx.): 4.41 pounds (2.0 kgs.)**ENERGY DENSITY (20 hr. rate):**

1.40 WH/cubic inch (85 WH/liter)

SPECIFIC ENERGY (20 hr. rate):

13.6 WH/pound (30.0 WH/kg)

INTERNAL RESISTANCE OF CHARGE:

10 milliohms (approx.)

MAXIMUM DISCHARGE CURRENT WITH STANDARD TERMINALS:

40 amperes

MAXIMUM SHORT-DURATION DISCHARGE CURRENT:

300 amperes

OPERATING TEMPERATURE RANGE:**CHARGE** 5°F to 122°F

(-15°C to 50°C)

DISCHARGE -4°F to 140°F

(-20°C to 60°C)

CHARGE RETENTION (shelf life) at 68°F (20°C):**1 month** 97%**3 months** 91%**6 months** 85%**LIFE EXPECTANCY:****STANDBY USE** 3 to 5 years**CYCLE USE (approx.)****100% depth of discharge** 250 cycles**50% depth of discharge** 550 cycles**30% depth of discharge** 1200 cycles**SEALED CONSTRUCTION:**

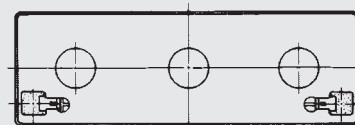
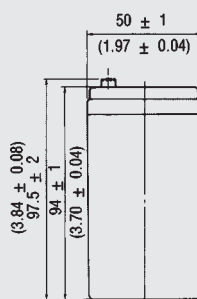
Can be operated in any position without leakage.

STANDARD TERMINAL:

Quick disconnect .187

HOUSING MATERIAL: ABS Resin**OPTIONAL:** Container and cover made from Flame Retardant ABS (UL94-VO, L.O.I.>28)

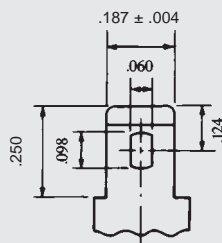
DIMENSIONS



DIMENSIONS: MM (INCHES)

TERMINAL

Available with .250 option



INCH = MM

.250 6.35

.185 4.70

.124 3.15

.098 2.49

.060 1.52

.031 0.79

.020 0.51

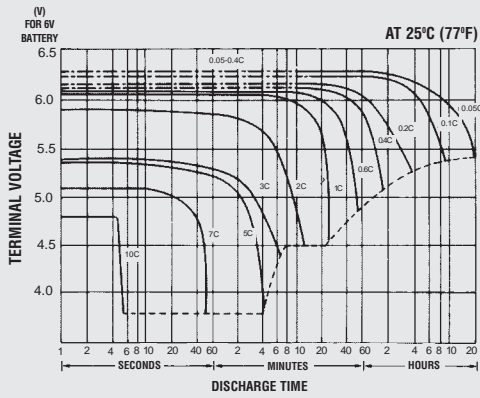
.004 0.10

DIMENSIONS: MM (INCHES)

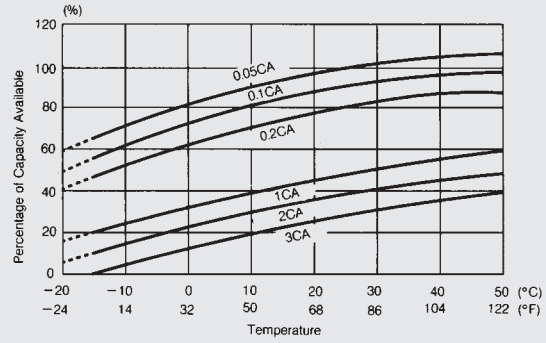


RECOGNIZED BY UL, File No. MH 16464

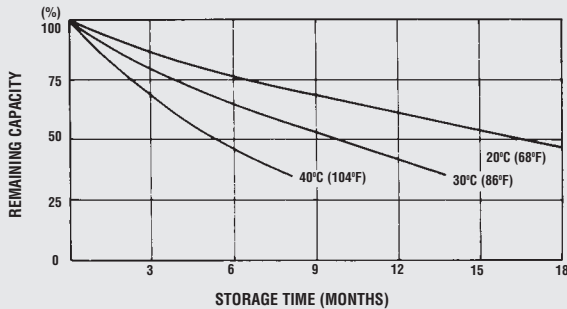
DISCHARGE CHARACTERISTIC CURVES



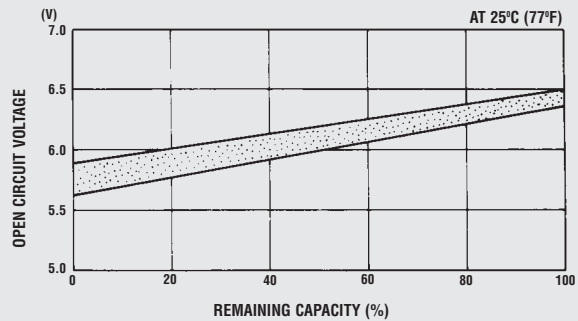
TEMPERATURE EFFECTS IN RELATION TO BATTERY CAPACITY



SELF DISCHARGE CHARACTERISTICS

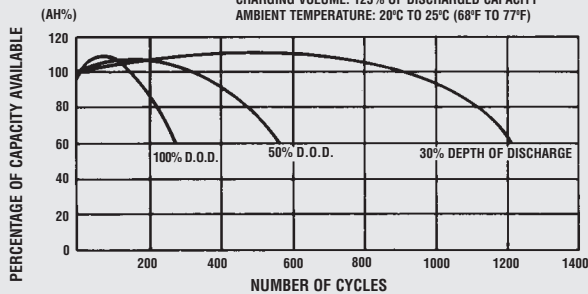


OPEN CURCUIT VOLTAGE VS REMAINING CAPACITY



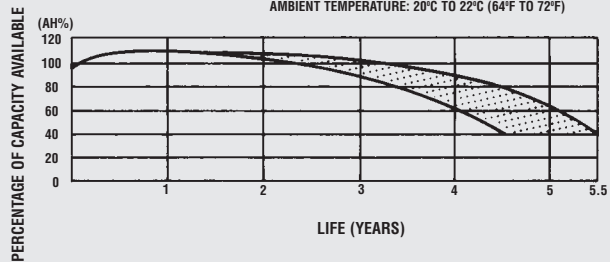
CYCLE SERVICE LIFE IN RELATION TO DEPTH OF DISCHARGE

TESTING CONDITIONS: DISCHARGE CURRENT: 0.17C AMP. (F.V. 1.7V/CELL)
 CHARGING CURRENT: 0.09C AMP.
 CHARGING VOLUME: 125% OF DISCHARGED CAPACITY
 AMBIENT TEMPERATURE: 20°C TO 25°C (68°F TO 77°F)



FLOAT SERVICE LIFE

TESTING CONDITIONS: FLOATING VOLTAGE 2.25 TO 2.30V/CELL
 AMBIENT TEMPERATURE: 20°C TO 22°C (64°F TO 72°F)



When the battery will be used by the current drain in excess of 30A, consult with Yuasa, Inc. prior to use.

CHARGING METHODS (At 20°C)

Cycle use:

Maximum charging current 2.5A

Charging voltage 7.2 to 7.5V

Standby use:

Float charging voltage 6.75 to 6.90V

CAUTION

- Avoid short circuit
- Do not charge in a sealed container.

Represented by:

When ordering new batteries, also remember to properly recycle your old lead batteries. Federal and state regulations require lead-acid batteries be recycled. Yuasa's nationwide service organization can arrange pickup, transportation to and recycling at any one of our company affiliated smelters. Call 1-800-972-7372 for more information.



Sales Offices

Eastern Region: 201-964-0118 • 1-800-962-1287
 FAX 201-964-0720

Western Region: 562-949-4266 • 1-800-423-4667
 FAX 562-949-5527

Corporate Office: P.O. Box 14145, Reading, PA 19612-4145
 FAX 610-372-8613

Visit us on the web at: www.yuasastationary.com

Please check our website for literature updates